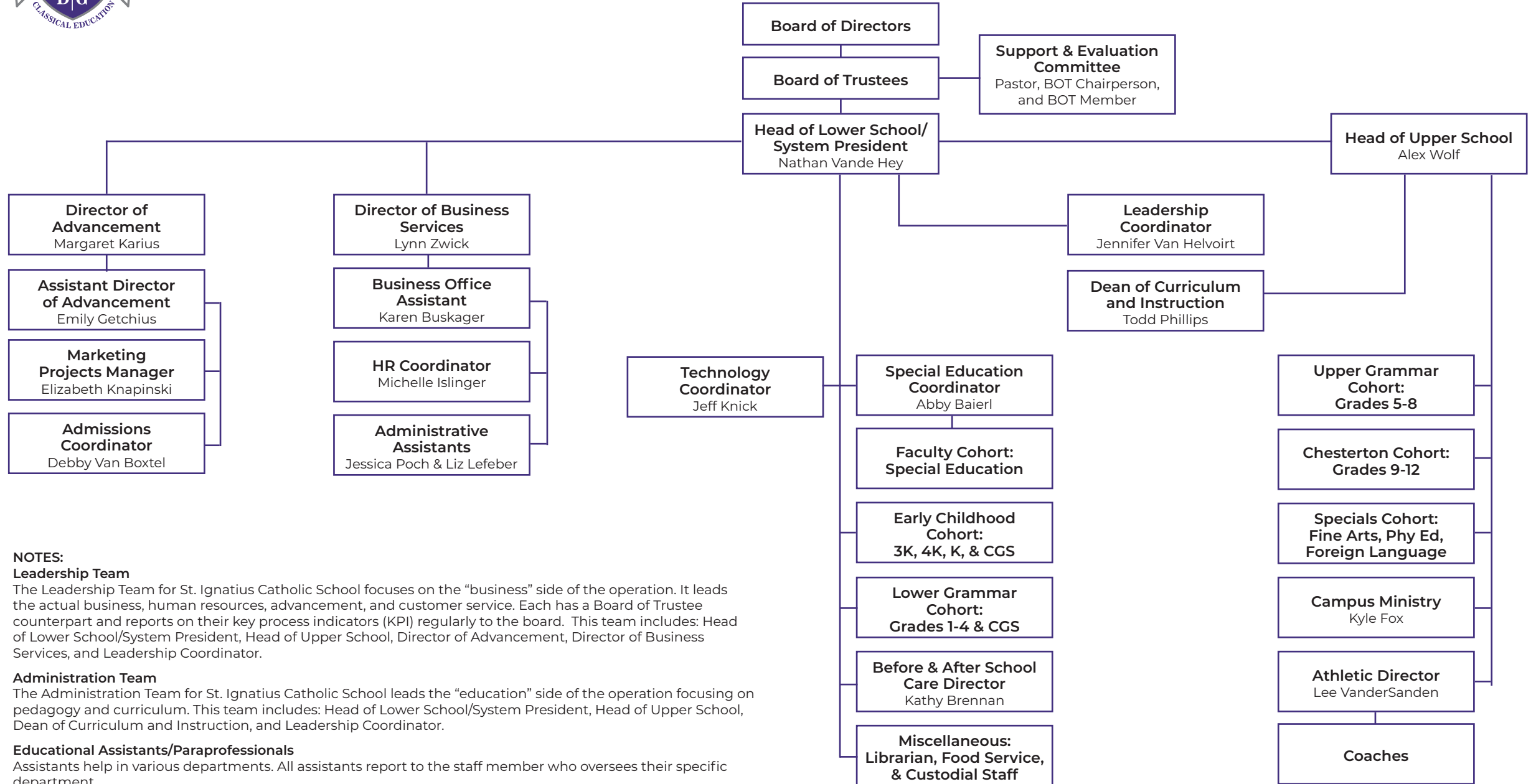


# Chain of Command Organizational Chart



**NOTES:**

**Leadership Team**

The Leadership Team for St. Ignatius Catholic School focuses on the “business” side of the operation. It leads the actual business, human resources, advancement, and customer service. Each has a Board of Trustee counterpart and reports on their key process indicators (KPI) regularly to the board. This team includes: Head of Lower School/System President, Head of Upper School, Director of Advancement, Director of Business Services, and Leadership Coordinator.

**Administration Team**

The Administration Team for St. Ignatius Catholic School leads the “education” side of the operation focusing on pedagogy and curriculum. This team includes: Head of Lower School/System President, Head of Upper School, Dean of Curriculum and Instruction, and Leadership Coordinator.

**Educational Assistants/Paraprofessionals**

Assistants help in various departments. All assistants report to the staff member who oversees their specific department.